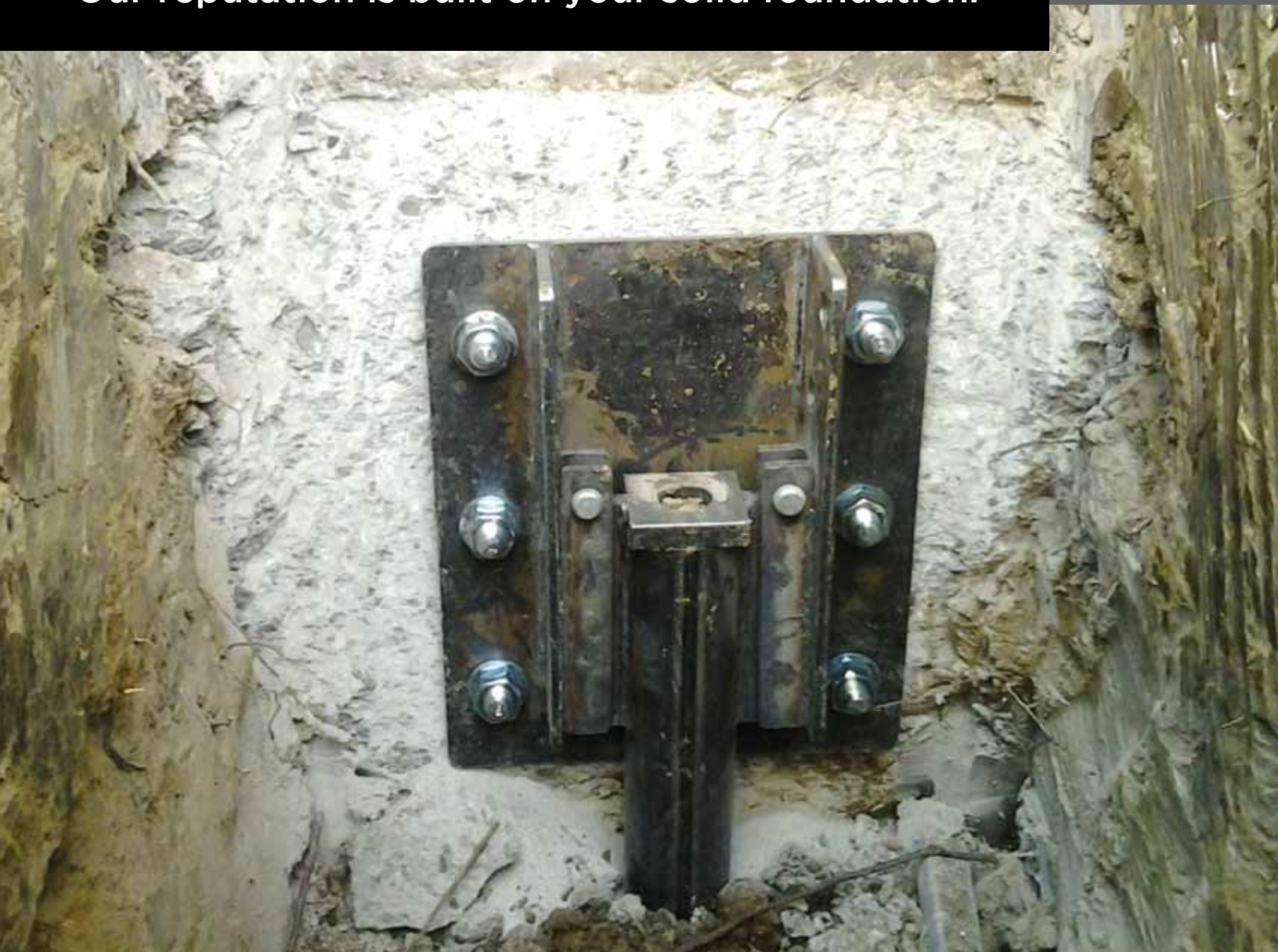


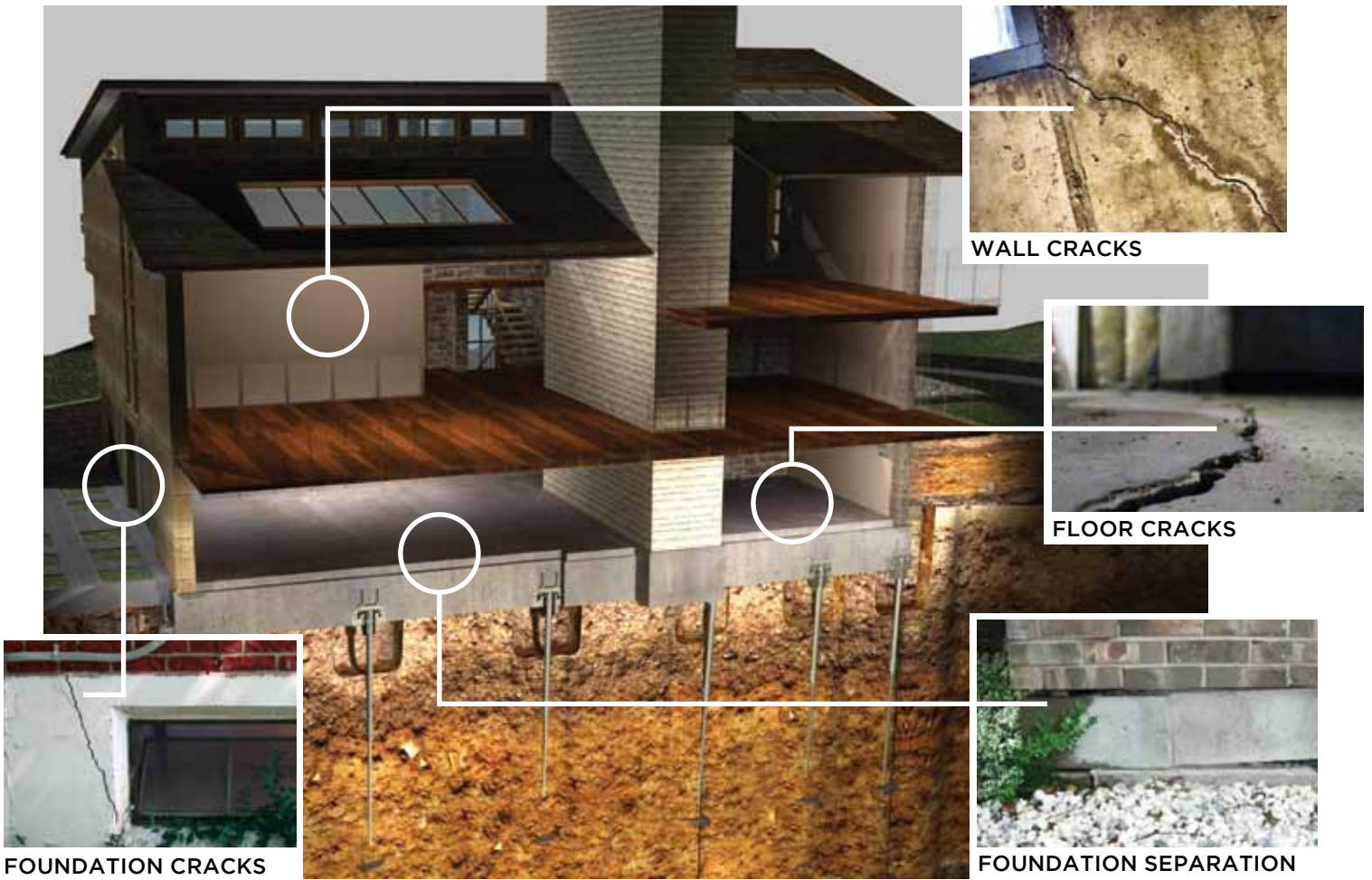
# ATLAS RESISTANCE PIER SYSTEM

Our reputation is built on your solid foundation.



# RESISTANCE PIERS FOR FOUNDATION REPAIR

Don't ignore the signs of stress to your homes foundation. Putting this off will only lead to more costly repairs in the future.



## EXPANSIVE SOILS & FOUNDATION SETTLEMENT

One in every four homes in the United States rest on expansive soils.

### INADEQUATE DRAINAGE



Poor drainage is a major factor contributing to expansive soils due to over saturation.

### HIGH EXPANSIVE SOIL



An unstable base for your home's foundation will result when expansive soils contract or shrink when moisture evaporates or drains from the ground.

# WHAT YOU CAN EXPECT DURING A FOUNDATION REPAIR

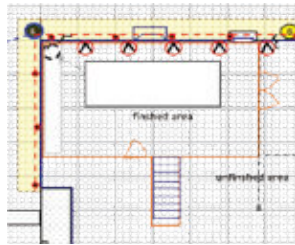
1.

Our certified installer will inspect the condition of your home's foundation.



2.

You will receive a customized foundation repair plan.



3.

Your home is prepared for the new foundation support system.



EXCAVATION

4.

Atlas Resistance Piers are selected and brackets are spaced and attached at proper intervals to support the load of your home.



INSTALLATION PREPARATION

5.

The Atlas steel pier is driven, under controlled hydraulic pressure, to a depth that is capable of supporting the weight of your foundation.



UNDERPINNING INSTALLATION

6.

Rigorous, on-site load tests are conducted to assess the capacity of each pier. This ensures the load is properly supported immediately after the pier is installed.

7.

At each pier location, controlled hydraulic pressure is used to transfer the load of your foundation to the Atlas steel pier system.

## COMPONENTS



UNDER FOOTING BRACKET

OR...



OPTIONAL WALL PLATE BRACKET

PIER PIPE SECTIONS

FRICTION REDUCTION COLLAR



# INDUSTRY'S BEST WARRANTY

## PROTECT YOUR FAMILY

When foundation repair is needed, the value and safety of the structure is at risk. Maintenance is a crucial preventative measure to protect the health and well being of your home. Excessive settlement can be detrimental to your home's load bearing capacity.

Whether the issue is caused by expansive clay, poor soil density, improper maintenance, or faulty construction ... we are here to help.

## PROTECT YOUR FOUNDATION

By choosing to partner with us, you are selecting the industry's most highly skilled and certified installation team, coupled with CHANCE - the most trusted and proven foundation repair system. You can rest assured you have made the right choice.

We are so confident in our history and our reputation, we stand behind each and every installation. Placing your trust in our team of professionals is backed by our commitment to deliver on our promises, every time, for your peace of mind.

