

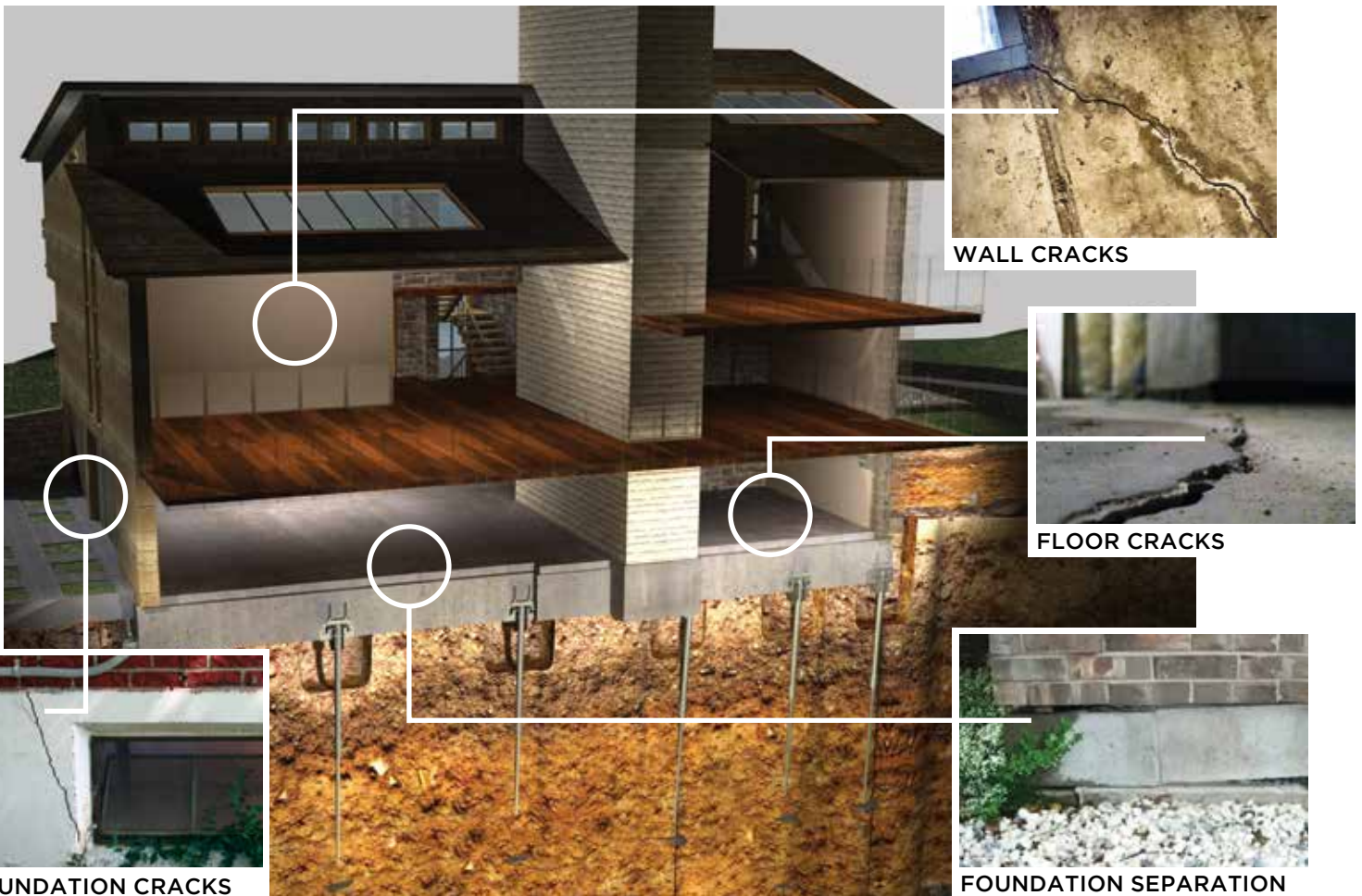
CHANCE HELICAL PIER FOUNDATION SYSTEM

Solid foundation solutions for your home.



HELICAL PIERS FOR FOUNDATION REPAIR

Don't ignore the signs of stress to your homes foundation. Putting this off will only lead to more costly repairs in the future.



EXPANSIVE SOILS & FOUNDATION SETTLEMENT

One in every four homes in the United States rest on expansive soils.

INADEQUATE DRAINAGE



Poor drainage is a major factor contributing to expansive soils due to over saturation.

HIGHLY EXPANSIVE SOIL



An unstable base for your home's foundation will result when expansive soils contract or shrink when moisture evaporates or drains from the ground.

WHAT YOU CAN EXPECT DURING A FOUNDATION REPAIR

1.

Our certified installer will inspect the condition of your home's foundation.



UNDERPINNING INSTALLATION

5.

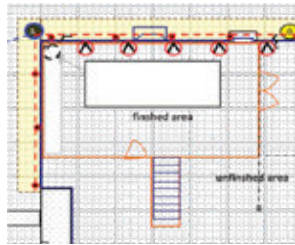
Helical piles are hydraulically screwed into the ground to a depth where the prescribed installation torque is achieved. Once the pile reaches final depth and the design capacity, a bracket is installed to secure the pile to the foundation.

6.

The final step utilizes a series of hydraulic jacks to transfer the weight of your home to the pile system. The jacks are then removed, leaving the structure securely supported on the piles.

2.

You will receive a customized foundation repair plan.



3.

Your home is prepared for the new foundation support system.



EXCAVATION



BEFORE



AFTER

COMPONENTS

SINGLE HELIX

DOUBLE HELIX

TRIPLE HELIX

EXTENSION(S)

All components are hot-dip galvanized to increase product life in aggressive soils.

FOUNDATION BRACKET

4.

Helical piles and brackets are selected and spaced at proper intervals to support the load of your home.



INSTALLATION PREPARATION



INDUSTRY'S BEST WARRANTY

STABILIZING THE WORLD

Engineered for dependability and long-term stability, the Chance Helical Foundation Piering System features exclusive piering techniques, tools, designs, and sizes that make other foundation methods a thing of the past. It provides a smart, cost-effective solution for sinking foundations.

PROTECT YOUR FAMILY

When foundation repair is needed, the value and safety of the structure is at risk. Maintenance is a crucial preventative measure to protect the health and well being of your home. Excessive settlement can be detrimental to your home's load bearing capacity.

Whether the issue is caused by expansive clay, poor soil density, improper maintenance, or faulty construction ... we are here to help.

PROTECT YOUR FOUNDATION

By choosing to partner with us, you are selecting the industry's most highly skilled and certified installation team, coupled with CHANCE - the most trusted and proven foundation repair system. You can rest assured you have made the right choice.

We are so confident in our history and our reputation, we stand behind each and every installation. Placing your trust in our team of professionals is backed by our commitment to deliver on our promises, every time, for your peace of mind.

